



# DK - 5150

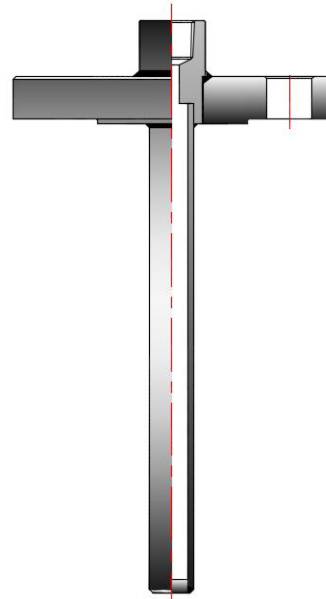
Welding type Thermowell

## Main Features

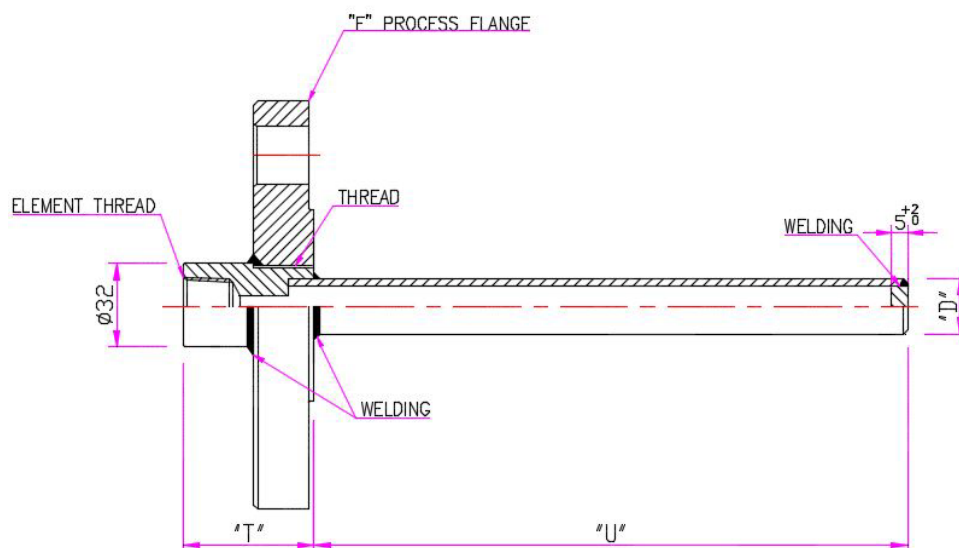
- For thermocouple and R.T.D with smooth immersion tube without process connection
- stainless steel ( 304 SS / 316 SS)

## Applications

- Chemical
- Water & waste water
- Energy
- Machinery



## Dimension





# DK - 5150

Welding type Thermowell

## Ordering details

	DK		-								
<b>Model</b>											
Welding type Flange thermowell	5150										
<b>Internal connection</b>											
PT 1/2"				1							
NPT 1/2"				2							
Other				3							
<b>Process connection</b>											
1/2" (15A)					1						
3/4" (20A)					2						
1" (25A)					3						
1 1/4" (32A)					4						
1 1/2" (40A)					5						
2" (50A)					6						
Other					7						
<b>Process connection Rating</b>											
150#						1					
300#						2					
600#						3					
1500#						4					
2500#						5					
10k						6					
20k						7					
30k						8					
Other						9					
<b>Facing</b>											
Flat face							FF				
Raised face							RF				
<b>Flange Material</b>											
304 SS								1			
316 SS								2			
A182 F316								3			
Monel								4			
hatelloy C								5			
Inconel 600								6			
Other								7			
<b>Well Material</b>											
304 SS									1		
316 SS									2		
A182 F316									3		
Monel									4		
hatelloy C									5		
Inconel 600									6		
Other									7		
<b>Out diameter</b>											
ASME 1/4"										1	
ASME 3/8"										2	
ASME 1/2"										3	
ASME 3/4"										4	
Other										5	
<b>Out diameter SCH.</b>											
SCH 10											1
SCH 20											2
SCH 40											3
OTHER											4
<b>Option</b>											
not											0
PMI Inspection											1
PT inspection											2
Hydrastatics pressure test											3
Cap & chain											4